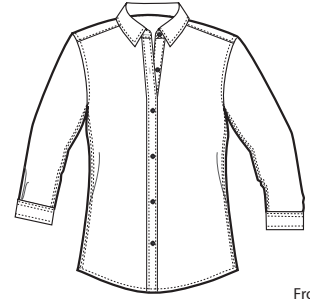
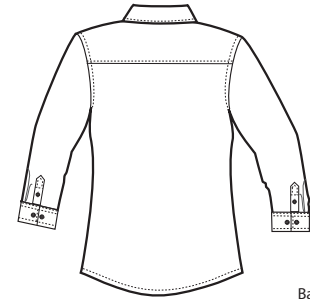


Ladies 3/4 Sleeve Easy Care Shirt

PORT | AUTHORITY®



Front



Back

L612

- * 4.5-ounce, 55/45 cotton/poly
- * Traditional, relaxed look
- * Open collar
- * Dyed-to-match buttons
- * Back box pleat

Care Instructions:
 Machine wash with like colors only
 Non-Chlorine bleach when needed
 Tumble dry low
 Warm iron, if necessary

Finished Measurements in Inches								
Size	XS	S	M	L	XL	XXL	1X	2X
Chest	17"	19"	21"	23"	25"	26 1/2"	28"	30 1/2"
Body	25"	26"	27"	28"	29"	30 1/4"	31 1/2"	32 1/2"
Sleeve	25 3/4"	26 3/8"	27"	27 5/8"	28 1/4"	28 7/8"	29 1/2"	30"

Chest width measured 1" below arm hole. Body length measured from high point shoulder seam to hem.
 Sleeve length measured from shoulder seam to hem.

Colors

- Black
- White
- Light Blue
- Red
- Royal
- Navy
- Burgundy
- Mediterranean Blue

Please Note:
 Colors shown are approximate and for reference only. For closest match see PMS colors, or for exact match, returnable samples and grommeted samples are available.

Color Chart				
Colors	Black	White	Light Blue	Red
Textile PMS	No Match	No Match	No Match	No Match
General PMS	ProBlk C	ClGy 1 C	No Match	207 C
Colors	Royal	Navy	Burgundy	Mediterranean Blue
Textile PMS	No Match	No Match	No Match	No Match
General PMS	No Match	432 C	No Match	No Match